



D I T T Y B A G



Ditty Bag

Finished Measurements: Approximately 12" by 15"

Materials:

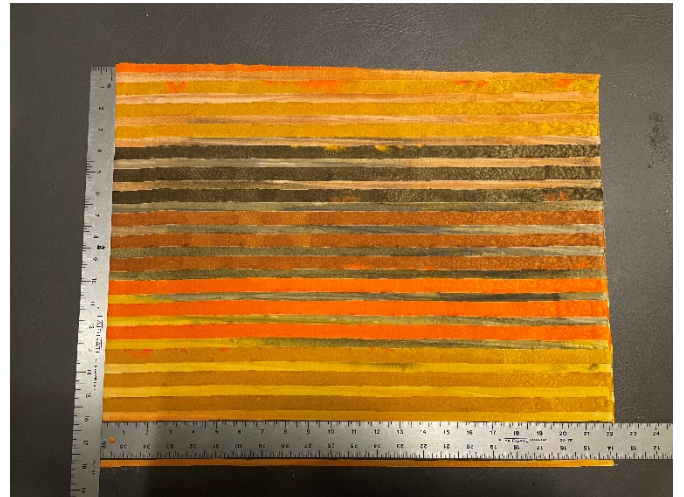
- 1 half yard of sturdy 44 inch wide fabric (does not have to be Christmas themed). 35 x 13 inches.
- 1 pair of 30" shoelaces, or 2 - 30" lengths of twill tape, cording, or macrame braid.

About this pattern: Ditty bags are attractive and practical gift bags. "Ditties" are used to pack handmade garments, a modest number of nonperishable snacks, several travel-size toiletries, and a Christmas card.

Instructions:

Cut a 35" x 13" piece rectangle of fabric.

Edge stitch side seams (and ends if necessary).

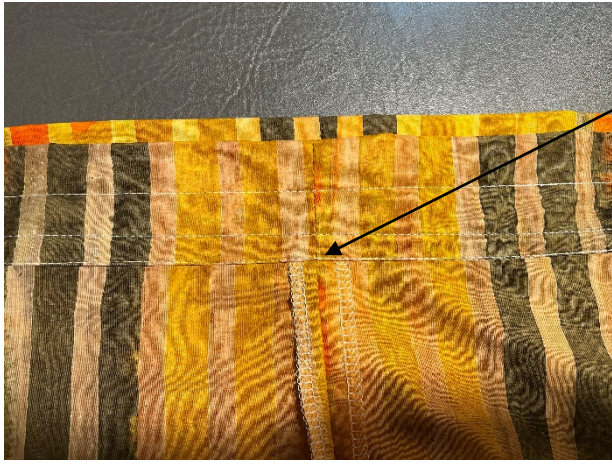


Fold fabric in half lengthwise so it measures 17.5" x 13" (keeping right sides together).

Stitch both side seams with a 1/2" seam allowance.

On the top edge, turn down a 1/2" and stitch hem. Make sure to fold the side seams open as you go around.

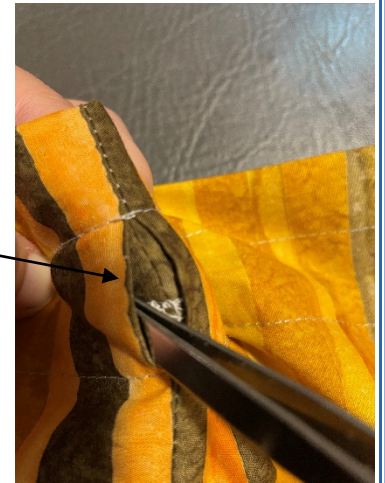




Fold the top down another 2" and stitch this edge down close to the bottom edge. Again, make sure that the side seams are folded open and are lying flat.

Stitch a second row $\frac{3}{4}$ " from the top edge of the bag to make a casing channel that is approximately 1" wide.

Turn the bag right side out. With a seam ripper or fine scissors, cut stitches on the outside of the bag only to open 1" casing channel at each side.



Insert 1 shoelace in one seam opening feeding it completely around inside the casing and exiting at the same spot. Knot ends together.

Repeat in the other seam opening with the second shoelace. Laces should emerge from the outside of the bag, and when pulled simultaneously close the bag.

